

FOMEI
SPECIAL


Wallpaper 170



© Jan Kaiser

Wallpaper 170

wall paintings, photo wallpaper 170 g/m²

 ICC profily a návody: www.fomei.com/profily
/ ICC profiles & guides: www.fomei.com/profiles

Řady inkoustových tiskáren kompatibilní s FOMEI PAPER
/ Inkjet printer series compatible with **FOMEI PAPER**:

Hobby tiskárny / Hobby printers:

Canon PIXMA G, MG, MX, iX, iP, TS

EPSON EcoTank L, Stylus Photo, XP

HP Smart Tank

Profesionální tiskárny / Professional printers:

Canon PIXMA PRO, iPF, iPF PRO

EPSON Stylus PRO (SP), SureColor P (SC-P)

HP DesignJet Z

Hluboce matná a jemně strukturovaná foto tapeta pro inkjet potisk, PVC-free - plně ekologické médium.

Určení: tisk tapet a nástěnných maleb vhodných i do školek a zdravotnických zařízení

/ Deep matte and fine textured photo wallpaper for inkjet printing, PVC-free - fully ecological medium.

Usage: printing of wallpapers and murals also suitable for kindergartens and medical facilities

parametr / parameter	hodnota / value	standard / norm
gramáž / grammage	170 g/m ²	ISO 536
tloušťka / thickness	310 µm	ISO 534
odstín (CIE-L*a*b*) / tint (CIE-L*a*b*)	96.3, 0.0, -0.1	CIE, D50/2°, M0
opacita (neprůhlednost) / opacity	> 92 %	ISO 2471
jádro role / roll core	3" (76,2 mm)	softpress core

Manipulace s papírem

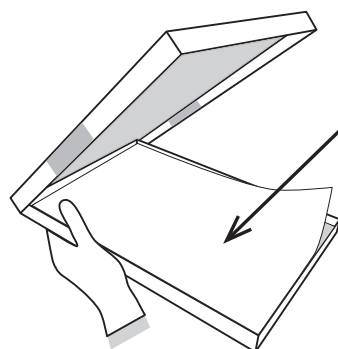
/ Paper handling



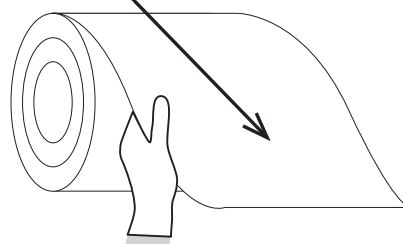
18-25 °C



40-60 %



tisková strana / printing side



rukavice
/ gloves

 **FOMEI**



FOMEI SPECIAL

special media for inkjet printing



Satin DUO 265

double-sided semiglossy paper 265 g/m²

semiglossy



Photo Matt DUO 230

double-sided deep matte paper 230 g/m²

matte



Metallic Gloss 255

high metallic glossy RC paper 255 g/m²

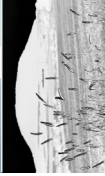
glossy



Matte Backlit Film 290

rigid backlit & reflective film 290 g/m²

matte



Clear Film 180

clear polyester film 180 g/m²

semiglossy



SA Paper Pearl 240

semiglossy self-adhesive paper 240 µm

semiglossy



SA Vinyl Glossy 270

high glossy self-adhesive vinyl 270 µm

glossy



SA Vinyl Matte 280

velvet matte self-adhesive vinyl 280 µm

matte



Wallpaper 170

wall paintings, photo wallpaper 170 g/m²

matte



Label Matte 160

matte label paper 160 µm

matte

for Canon, EPSON, HP inkjet printers

for EPSON, Fujifilm, Noritsu inkjet drylabs

available sheets - format [cm]										available rolls - width [cm]													
89	102	127	152	203	210	254	305	10x15	13x18	A4	A3	A3+*	A2	A2+*	43.2	61.0	65.0	91.4	106.7	111.8	127.0	152.4	
							● 50 m	●	●	●	●	●	●	●	●	●							
							● 50 m	●	●	●	●	●	●	●	●	●					●		
		● 50 m	● 50 m	● 50 m	● 50 m		● 50 m	●	●	●	●	●	●	●	●	●					●		
		● 30 m	● 30 m					●	●	●	●	●	●	●	●	●					●		
							● 30 m	●	●	●	●	●	●	●	●	●					●		
										●													
										●													
		● 65 m	● 65 m							●													